

MULTIPLEX

Newsletter

January 2022

The Chancery Rosewood | Issue No.11

Headlines in brief

- Welcome
- Site progress
- Look ahead
- Community update
- Environmental update
- Site working hours
- Who to contact



Welcome to our January update

Welcome to the latest issue of The Chancery Rosewood - Multiplex newsletter.

This monthly newsletter will provide an update on the works being undertaken by Multiplex Construction Europe Ltd. Multiplex has been appointed as the main contractor on the transformation of the former United States Embassy site on Grosvenor Square into a Grade II listed luxury hotel and retail destination.

Built for positive impact

Multiplex is a global contractor who has been creating landmark developments and delivering iconic projects for over 55 years. Employing over 6,600 people worldwide, we have 1,000 people and 44 completed projects in the United Kingdom alone.

We aim to outperform, delivering projects in a safe, responsible and sustainable manner. Multiplex is fully ISO9001, 14001 and 18001 accredited and registered with the Considerate Constructors Scheme.

The Chancery Rosewood

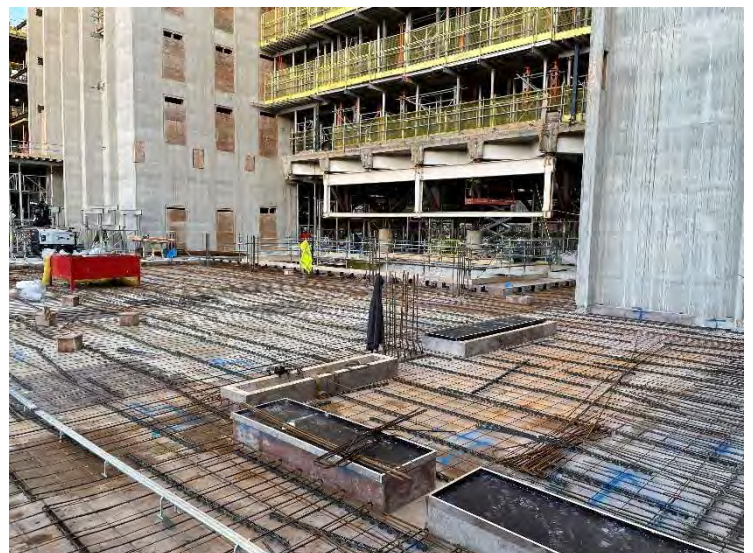
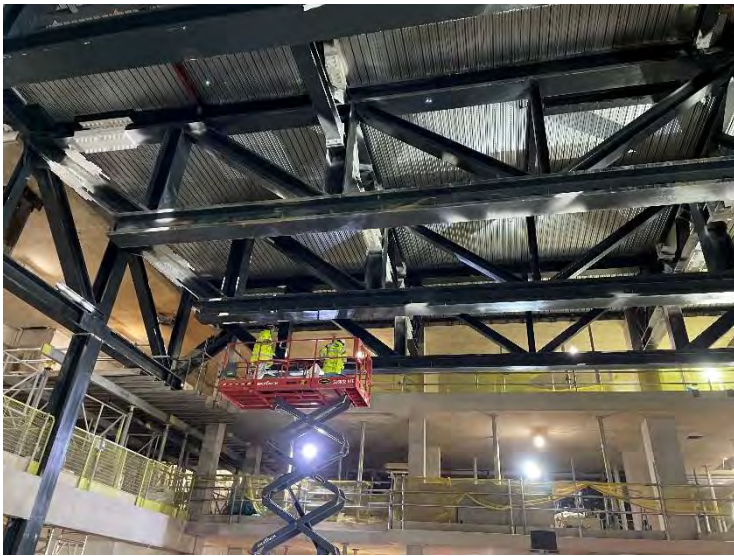
Multiplex have been appointed to lead the transformation of the former embassy designed by Eero Saarinen into a 144 room luxury hotel. The redevelopment includes dining and entertainment spaces, a spa and wellbeing facility, several flagship retail spaces and public realm improvements.

Site Progress – January 2022

- Large ballroom truss steelwork complete inc. painting works.
- Level 6 slab preparation works commenced
- Electrical works commenced to basements
- Ballroom entrance stairs installations commenced from basement level
- High level drainage commenced to ballroom area
- Temporary column removals commenced
- Buildings load transfer from temporary supports to permanent columns from level 1 complete to west elevation

Look Ahead – February 2022

- Level 6 slab works continue with concrete pours
- Commence level 7 slab preparation works
- Temporary works removals continue
- Commence steelwork preparation works to large central atrium area
- Commence lift installations between B3-GF satellite area to west elevation
- Continue mechanical and electrical installations to basement areas
- Commence mechanical pipework modules to level 2 corridors
- Continue installation works to west Lightwells



Built for **positive impact**

Classification - Public

Community Update

If you would like to receive the monthly newsletter for The Chancery Rosewood and notifications of out of hours works and other activities that affect the neighbourhood, please contact our Resident Liaison Manager to opt-in for all future communications:

Peter Walsh

peter.walsh@multiplex.global

mob: 07767 858 638

For all matters pertaining to the Community Liaison Group meetings, please email

30GrosvenorSquare@fourcommunications.com

- 05th January 2022 – our contractor JA Brooks welcomed this month their new starter Elliot Walker. We met him at the first Westminster Job Fair last year and has started with JA Brooks as a Commercial Assistant apprentice.
- 12th January 2022 – JA Brooks have employed a female adult trainee, Chloe Eaton who started working on the 30 Grosvenor Square project as a plumbing apprentice this month.
- 12th January 2022 – members of the 30GS team volunteered with Construction Youth Trust at the City of Westminster College. Students were 16-20 years old and are studying Multi Skills Level 1. We delivered two sessions about valuable transferable skills for the construction industry.
- 13th December 2022 - 30GS project attended the Responsible Business Network, an online event organised by Westminster City Council, bringing developers and main contractors together to work collectively on local issues.

Environmental Update

- The noise, dust and vibration monitors located around the site continue to be used to ensure that the disturbance to the surrounding area remains within an acceptable limit.
- In 2021 at The Chancery Rosewood:
 - We diverted 100% of non-hazardous construction waste from landfill.
 - 100% of temporary and permanent timber brought to site was from FSC (Forest Stewardship Council) or PEFC (Programme for the Endorsement of Forest Certification) sources of natural, renewable solution for global environmental.
 - The electricity supplied to site was sourced using a green tariff.
- To learn more about Multiplex Net Zero Carbon commitments for 2022 and beyond, you can read about our One Decade to Act pathway to net zero carbon here:
<https://www.multiplex.global/uk/news/one-decade-to-act/>

Built for positive impact

Contacts

24/7 Emergency phone line:
+44 (0) 7767 858 638



Mark Williamson
Project Director



Jon Pepper
Project Manager



Peter Walsh
Resident Liaison Manager
Peter.walsh@multiplex.global



Luciana Campos
Social Value & Community Manager
Luciana.campos@multiplex.global



Joshua Davies
Senior Sustainability
Manager

Site Working Hours

Our site working hours below are agreed with the Westminster City Council:

8am – 6pm Monday to Friday

8am – 1pm Saturday

We will notify local residents of any variation to the above hours.

For any queries or further information

www.30grosvenorsquare.com

