

Grosvenor Square

Proposed Engagement Hub

March 2020

Ed Green

Edward.green@Grosvenor.com

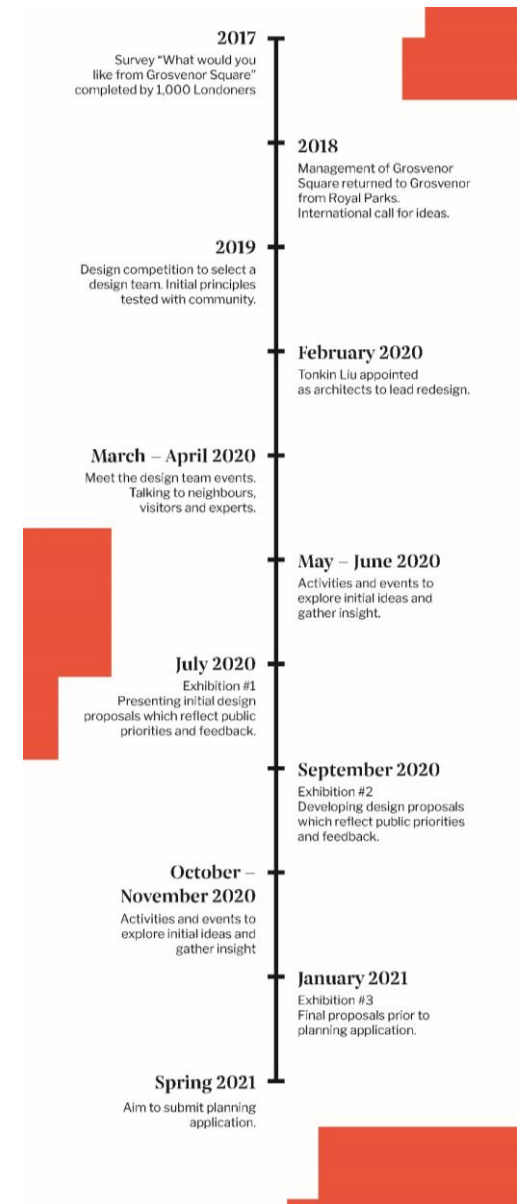
02073126377



GROSVENOR

Community Engagement Programme

- Grosvenor is committed to active community participation in the design process for re-imagining the Grosvenor Square.
- The square is a critically important piece of Mayfair; used and loved by so many across all it's communities.
- The Covid-19 epidemic means we have to change our engagement approach, and programme, for the year.
- We will be delivering additional digital and print activities over the coming weeks to ensure the community are involved as the design emerges.
- We continue to plan for face-to-face events that we can implement when the situation improves and government guidelines change.
- This document outlines our proposal for carrying out engagement within the Square.
- This proposal will only be implemented when it is socially responsible to facilitate groups of people coming together.
- We would like to submit a planning application in the coming weeks only so that when the situation improves we are ready to engage in person with the community.



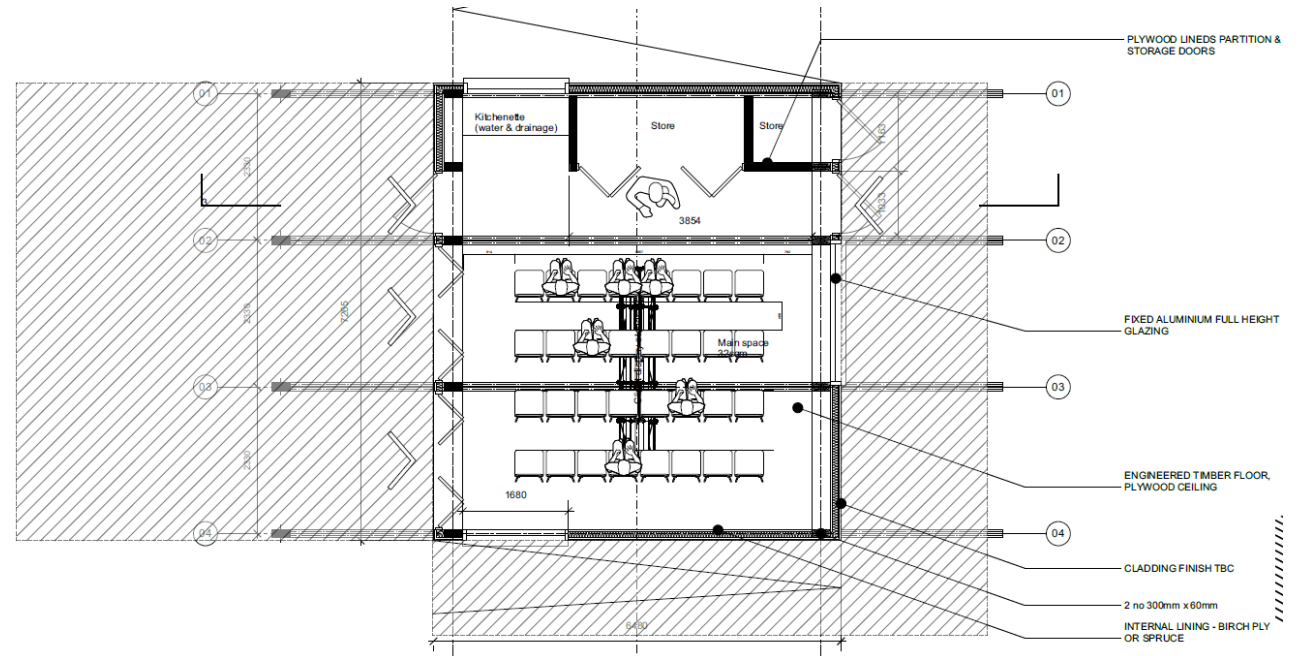
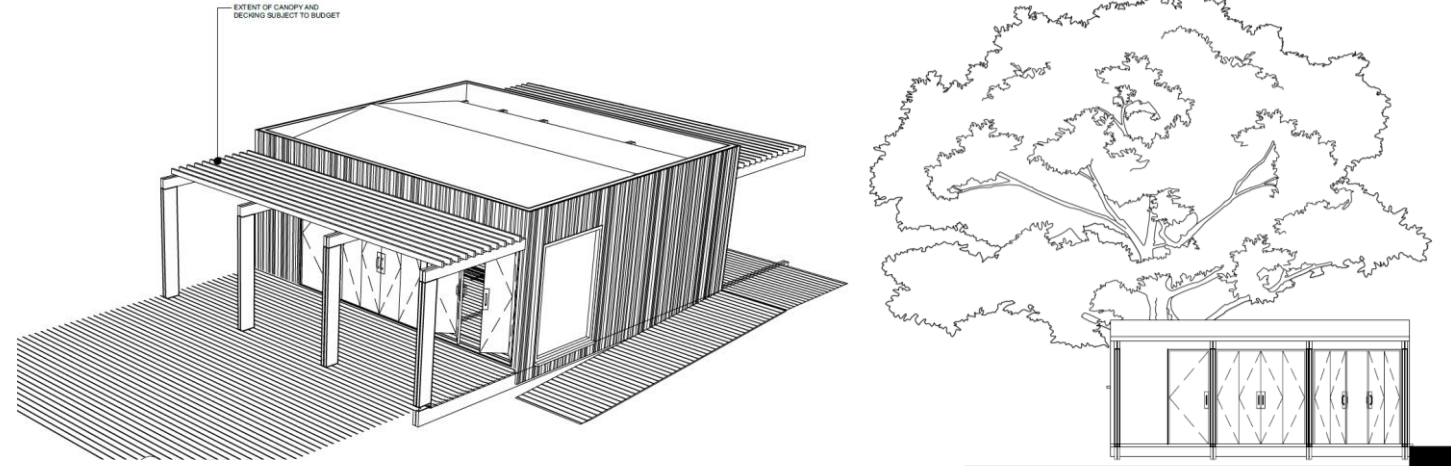
On Site Engagement

- We would like to install a temporary structure as an Engagement Hub in Grosvenor Square.
 - Information about the project will be permanently displayed in the Hub
 - It would be used for exhibitions, talks and workshops
 - The Hub would have its own small garden
 - The project team would base themselves in the Hub at specified times
- We want to do this for a number of reasons:
 - Current users of the square are a key community that we need input from in the design process
 - Talking to people about the Square in the Square will help stimulate their thinking and visualise the proposals
 - The garden would be used to show the kinds of horticulture that is being considered, encouraging a more meaningful conversation
 - The project team would be easily accessible to members of the public for questions and feedback



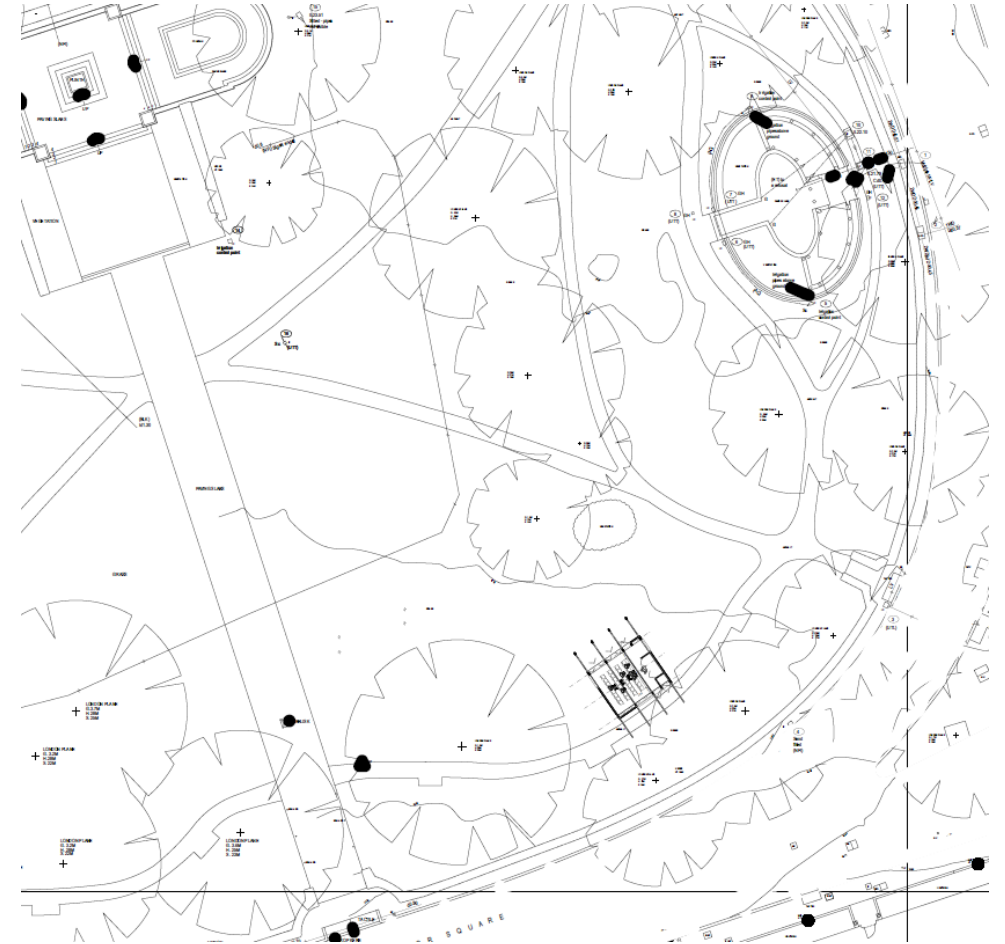
Proposed Structure

- Timber clad structure with bi-fold glass doors and two other glazed panels
- c.45sqm
- Small deck and canopy
- To sit within it's own small garden, including climbers that would green some of the vertical sides
- Sits on concrete floor pads (hidden by cladding), so no foundations required
- Majority of work done off site. On-site rig/de-rig in just a few days



Proposed Site

- Proposal to be installed as soon as practical, and in place until c.March 2021
 - Timeframe allows for all consultation activity ahead of submission of planning & listed building consent applications
 - Hours of use TBC but will be within garden opening hours only
- Exact location not yet fixed, but we believe somewhere just inside the outer path towards the SE corner is most appropriate
 - Far enough away from the centre that it won't detract from peoples enjoyment of the square nor impact on the memorials
 - Close enough to main thoroughfare to capture the interest of passers-by
 - Close to power source (next to Diplomatic Gates)
 - No impact on trees and existing planting
- When (if) community events are able to take place in the Square, we will design activities to ensure the Hub participates.
- Grass will be re-turfed once removed.





GROSVENOR